

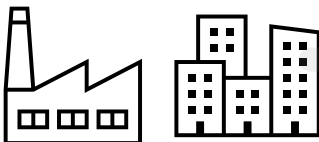
AI FLANDERS

BUILDING OUR DIGITAL FUTURE



2

IMPLEMENTATION



1

RESEARCH



Flanders AI Research Program

3

SUPPORTING ACTIVITIES

Skills



Vlaanderen
is onderwijs & vorming

Ethics & Legal



Citizen Projects and
Public Outreach



DEPARTMENT OF
ECONOMY
SCIENCE &
INNOVATION



AGENTSCHAP
INNOVEREN &
ONDERNEMEN



RESEARCH

www.flandersairesearch.be



HEALTH



INDUSTRY



ENERGY



GOVERNMENT &
CITIZENS



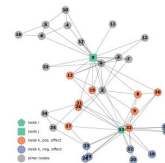
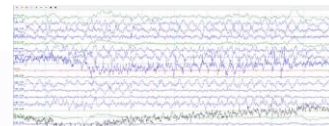
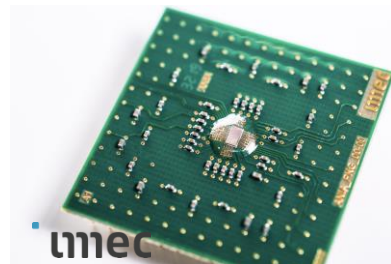
Human-centered AI



Energy-efficient AI / Sustainable AI



Data-efficient AI / Productive AI



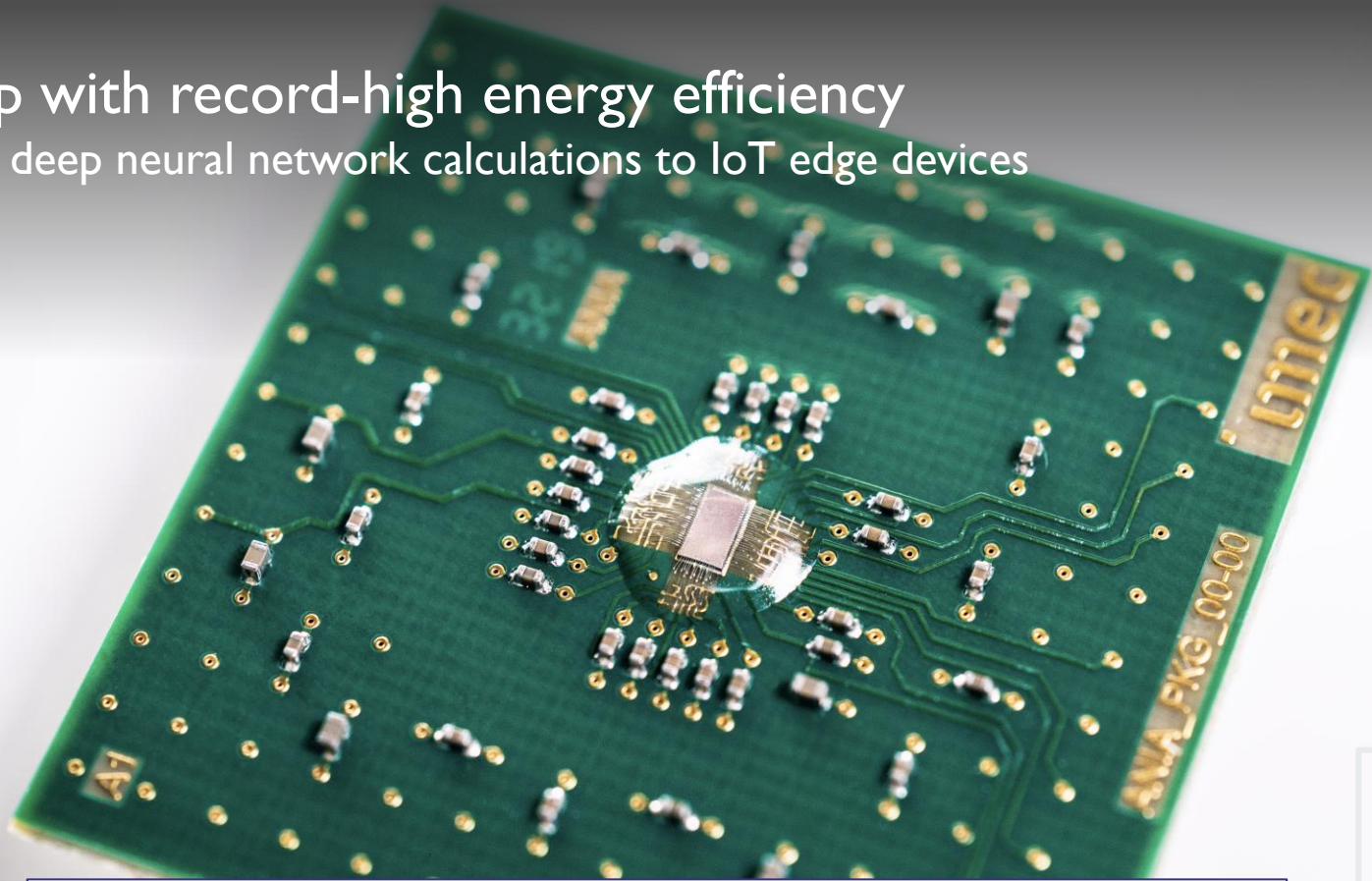
350 Researchers, of which 90 professors, 140 PhD students





AI chip with record-high energy efficiency

Bringing deep neural network calculations to IoT edge devices



Energy-efficient AI / Sustainable AI

CHALLENGE 2

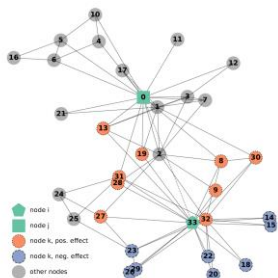


EDGE AI

CHALLENGE 1



AI-DRIVEN DATA
SCIENCE

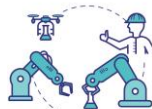


Explainable & Fair AI methods on graphs

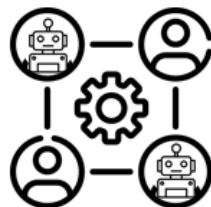


Tensor Methods in Machine Learning

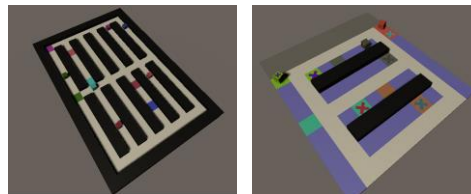
CHALLENGE 3



COLLABORATIVE AI



*Investigating the reasons that lead humans to delegate a task to an AI system. **Experiments with cohorts of users in collaboration with social scientists**, in order to study the individual preferences of people and observe how they act.*



*“**Toolbox for benchmarking** of several multi-agent planning and learning methods.”*



Data-efficient AI / Productive AI

Classify without labels



*For applications that require classification of images
Methods for reducing time and manual work for labeling the datasets before they can be used in the AI models.*

Segment without labels



CHALLENGE 4



HUMAN-LIKE AI

AI FLANDERS

BUILDING OUR DIGITAL FUTURE



Supporting the adoption of AI for:

Human-centered, sustainable
and prosperous digital future,
taking into account
well-being of people and
care for our planet

Innovation and
economic growth

In a sustainable Flemish and international ecosystem, in line with the European ambition for 2030